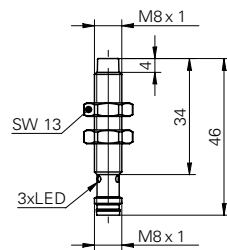


## Inductive proximity switch

## IFRM 08P13G1/S35L

## dimension drawing



## general data

mounting type	unshielded
special type	enhanced distance (GammaProx)
nominal sensing distance $S_n$	6 mm
hysteresis	2 ... 25 % of $S_r$
output indicator	3 port LED red

## electrical data

switching frequency	< 400 Hz
voltage supply range +Vs	12 ... 30 VDC
current consumption max.	18 mA
output circuit	PNP make function (NO)
voltage drop $V_d$	< 2 VDC
output current	< 200 mA
short circuit protection	yes
reverse polarity protection	yes

## mechanical data

type	cylindrical threaded
material (sensing face)	PBT
housing material	stainless steel
dimension	8 mm
housing length	46 mm
connection types	connector M8

## ambient conditions

operating temperature	0 ... +60 °C
protection class	IP 67

## photo



## connection diagram



- 4-fold sensing distance