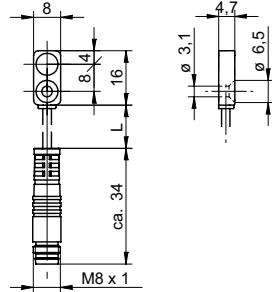


## Inductive linear sensors

## IWFM 08U6501/KS35

## dimension drawing



## general data

mounting type	quasi-flush
measuring distance Sd	0 ... 2 mm
resolution	<math>< 0,001 \text{ mm}</math> (stat.) <math>< 0,005 \text{ mm}</math> (dynam.)
repeat accuracy	<math>< 0,02 \text{ mm}</math>
linearity error	$\pm 100 \mu\text{m}$
temperature drift	$\pm 5 \text{ \%}$ (Full Scale)

## electrical data

response time (factory characteristic)	<math>< 1 \text{ ms}</math>
voltage supply range +Vs	10,8 ... 14,4 VDC
current consumption max. (no load)	10 mA
output circuit	voltage output
output signal	0 ... 5 VDC
load resistance	> 3000 Ohm
short circuit protection	yes
reverse polarity protection	yes

## mechanical data

type	rectangular
housing material	die-cast zinc nickel plated
dimension	8 mm
housing length	16 mm
connection types	flylead connector M8

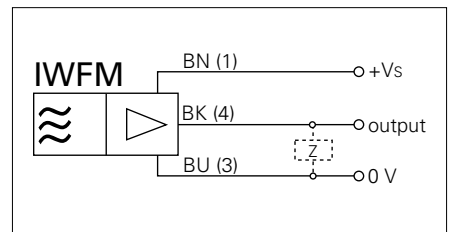
## ambient conditions

operating temperature	10 ... +60 °C
protection class	IP 67

## photo



## connection diagram



- extra flat housing
- through bore for M3 screw
- standard cable length 200 mm (L)
- Voltage supply 12 VDC