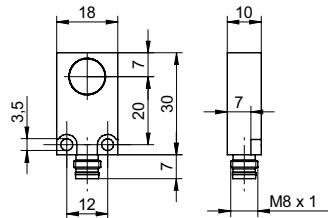


## Inductive linear sensors

## IWFM 18L9504/S35A

## dimension drawing



## general data

mounting type	flush
measuring distance $S_d$	0 ... 4 mm
resolution	< 0,005 mm
repeat accuracy	< 0,01 mm
linearity error	$\pm 4\%$ ( $S = 0,5 \dots 4$ mm Full Scale)
temperature drift	$\pm 5\%$ (Full Scale)

## electrical data

response time (factory characteristic)	< 2 ms
voltage supply range +Vs	15 ... 30 VDC
current consumption max. (no load)	40 mA
output circuit	voltage - / current output
output signal	0 ... 10 V / 4 ... 20 mA
load resistance	> 1000 Ohm ( $U_{out}$ ) / 330 ... 1000 Ohm ( $I_{out}$ )
voltage drop $V_d$	< 7,2 VDC ( $I_{out}$ )
short circuit protection	yes
reverse polarity protection	yes

## mechanical data

type	rectangular
housing material	brass nickel plated
dimension	18 mm
housing length	30 mm
connection types	connector M8

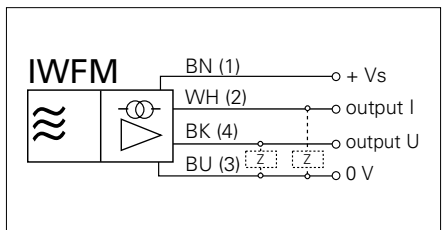
## ambient conditions

operating temperature	-10 ... +70 °C
protection class	IP 67

## photo



## connection diagram



- linearity deviation ( $S = 0,5 \dots 4$  mm)  $\pm 4\%$  (Full Scale)
- load resistance:  $U_{out}$  min 1000 Ohm /  $I_{out}$  330 - 1k
- voltage drop  $V_d$ :  $I_{out}$  7,2 V