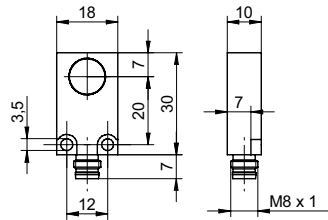


Inductive linear sensors

IWFM 18U7504/S35A

dimension drawing



general data

mounting type	flush
measuring distance S_d	0 ... 4 mm
resolution	< 0,005 mm
repeat accuracy	< 0,01 mm
linearity error	$\pm 0,4$ %
temperature drift	± 5 % (Full Scale)

electrical data

response time (factory characteristic)	< 2,5 ms
voltage supply range +Vs	15 ... 30 VDC
current consumption max. (no load)	20 mA
output circuit	voltage output
output signal	0 ... 10 VDC
short circuit protection	yes
reverse polarity protection	yes

mechanical data

type	rectangular
housing material	brass nickel plated
dimension	18 mm
housing length	30 mm
connection types	connector M8

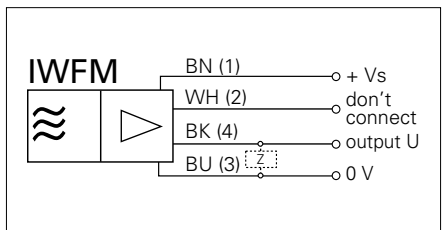
ambient conditions

operating temperature	-10 ... +70 °C
protection class	IP 67

photo



connection diagram



- linearized characteristic