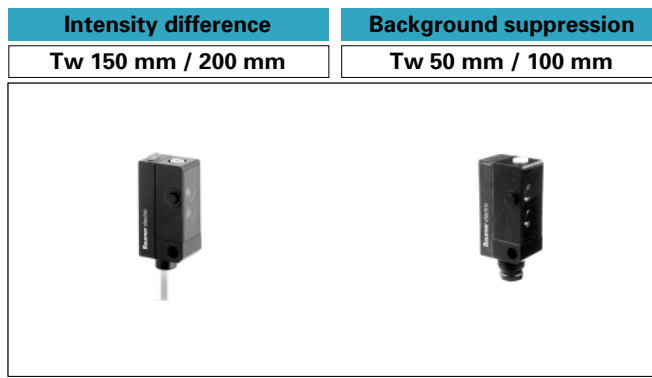


Diffuse sensors Series 10



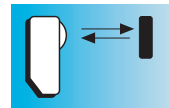
| | cable | connector | cable | connector |
|------------|--------------------|-------------------|-------------------|-----------|
| PNP | light operate | FZDK 10P1101 | FHDK 10P1101 | |
| | dark operate | FZDK 10P3101 | FHDK 10P3101 | |
| | light/dark operate | FZDK 10P5101/S35A | FHDK 10P5101/S35A | |
| NPN | light operate | FZDK 10N1101 | FHDK 10N1101 | |
| | dark operate | FZDK 10N3101 | FHDK 10N3101 | |
| | light/dark operate | FZDK 10N5101/S35A | FHDK 10N5101/S35A | |

| technical data | Tw 150 mm / 200 mm | | Tw 50 mm / 100 mm | |
|--|---|------------|---|-------------|
| sensing distance adjustable Tw | 5...150 mm | 5...200 mm | 20...50 mm | 20...100 mm |
| sensing range on white Tb | - | | 5...50 mm | 5...100 mm |
| characteristics | Nr. 101 | Nr. 102 | Nr. 111 | Nr. 112 |
| output indicator | yellow LED | | yellow LED | |
| alignment aid / soiled lens indicator | flashing LED | | flashing LED | |
| light source / wave length | pulsed red LED / 660 nm | | pulsed red LED / 660 nm | |
| voltage supply range | 10 - 30 VDC | | 10 - 30 VDC | |
| max. supply current average value / peak value | 23 mA / 33 mA | | 23 mA / 33 mA | |
| max. switching current | 100 mA | | 100 mA | |
| voltage drop | ≤ 1,8 VDC | | ≤ 1,8 VDC | |
| response time / release time | ≤ 1 ms / ≤ 1 ms | | ≤ 1 ms / ≤ 1 ms | |
| sensitivity adjustment | 270° pot | | 5 turn mechanical adjustment | |
| short circuit protection | yes | | yes | |
| reverse polarity protection | yes | | yes | |
| temperature range | -25...+65 °C | | -25...+65 °C | |
| housing material | Acrylnitril / Styrol / Acrylester (ASA) | | Acrylnitril / Styrol / Acrylester (ASA) | |
| protection class | IP 65 | IP 67 | IP 65 | IP 67 |

| Options | light operate | PNP | filead connector version | filead connector version |
|---------|---------------|-----|--------------------------|--------------------------|
| | | | FZDK 10P1101/KS35 | FHDK 10P1101/KS35 |



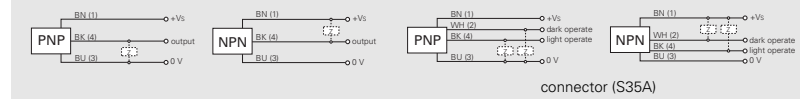
Vydas International Marketing
 Swan House Passfield Business Centre
 Lynchborough Road Passfield
 Hampshire GU30 7SB United Kingdom
 Tel:44(0)1428 751822 Fax:44(0)1428 751833
 Email:info@vydas.co.uk Web: www.vydas.co.uk



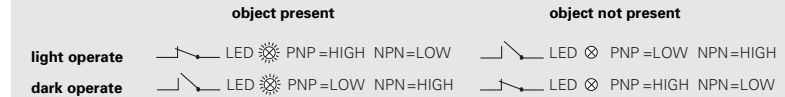
Series 10

- Subminiature design
- Fully adjustable sensing distance
- Background suppression by triangulation
- Visible red light
- Alignment aid / soiled lens indicator (flashing LED)

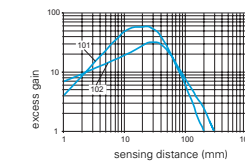
connection diagrams



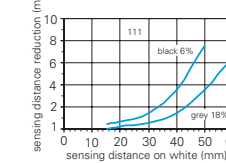
output states



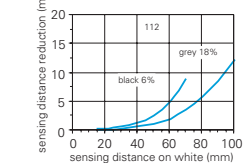
excess gain curve



sensing distance diagram cable



sensing distance diagram connector



connectors

| | | |
|--------------|-------|-------------|
| ES 8.2P | 3 pin | 2 m PUR |
| ESG 32SH0200 | 3 pin | 2 m PUR (2) |
| ESG 32AH0200 | 4 pin | 2 m PUR (2) |
| ESW 31AH0200 | 4 pin | 2 m PUR (2) |

suitable to type

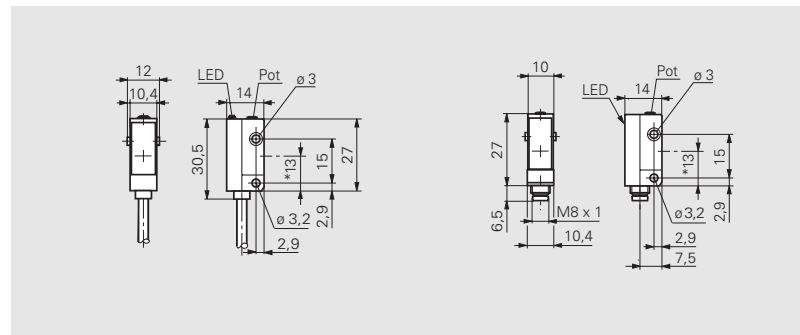
| |
|-------------------|
| FxDK 10P1101/KS35 |
| FxDK 10P1101/KS35 |
| FxDK 10x5101/S35A |
| FxDK 10x5101/S35A |

accessories (included)

| | |
|-----------------------------------|--------|
| mounting bracket (cable type) | 114501 |
| mounting bracket (connector type) | 133792 |

(2) halogen-free

for details see accessories section



* emitter axis

Tw adjustable up to 200 mm

Background suppression

Alignment aid

Visible red light

Plastic housing