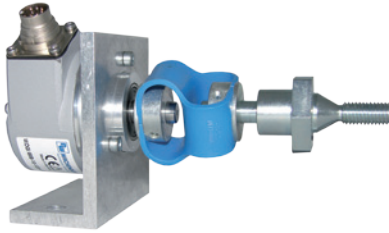


Installation Kit for frequency-control lifts WDGAS58B with shaft encoder



The following installation kits are available for fitting the encoder to a frequency controlled lift. Every installation kit consists:
1 x Encoder, 1 x Mountingangle, 1 x shielded cable 15 m length,
1 x double loop coupling, 1 x Shaftadapter

Mechanical Data

Housing

- Clamping flange: Aluminium
- Cap: Aluminium, powder coated
- Diameter: 58 mm

Shaft

- Material: stainless steel
- Diameter: 10 mm, H7
- Length: 20 mm
- Permitted load
Load: max. 220 N radial
max. 120 N axial
- Starting torque: approx. 1 Ncm at ambient temperature

Bearings

- Type: 2 precision ball bearings
- Service life:
1x 10⁹ U revs. at 100 % shaft load
1x 10¹⁰ U revs. at 40 % shaft load
1x 10¹¹ revs. at 20 % shaft load

Max. operating speed: 8000 rpm

Weight: approx. 250 g

Connections: SH8: radial connector, 8 pin

Operating temperature: -20 °C up to +80 °C

Storage temperature: -30 °C up to +80 °C

Machinery Directive: basic data safety integrity level

MTTF_c: 200 a

Mission time (T_m): 25 a

Nominal service life 1x 10¹¹ revs. at 8000 rpm and

(L_{10h}): 20 % rated shaft load

Diagnostic coverage (DC): 0 %

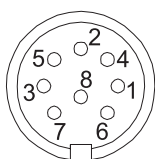
Encoder-Order No.: WDG58B-YYYY-ABN-H24-SH8
- YYYY: with 1024, 2048, 4096 PPR
- 3 channels, A, B and zero marker pulse N
- H24: 10 VDC up to 30 VDC HTL
Power supply
- SH8: radial connector, 8 pin

WDG58B-YYYY-ABN-R05-SH8
- YYYY: mit 1024, 2048, 4096 PPR
- 6 channels, A, B, zero marker pulse N and inv.
- 5 VDC TTL power supply with inv.
output circuit
- SH8: radial connector, 8 pin

YYYY: Please specify required. PPR: 1024, 2048 or 4096

Pin identification SH8

Function	Pin HTL	PIN TTL
Positive	2	2
Negative	1	1
A	3	3
A inv.	-	6
B	4	4
B inv.	-	7
N	5	5
N inv.	-	8

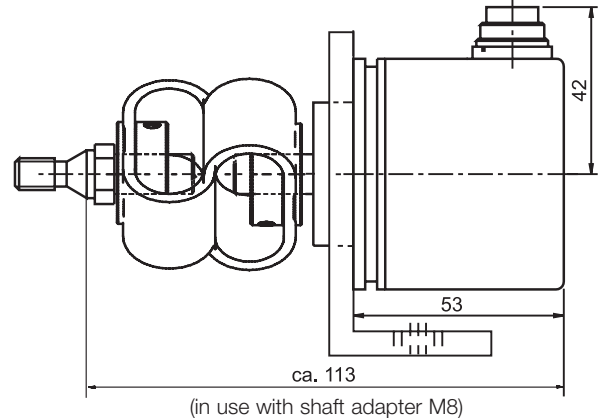


The view of the soldered side of the connector corresponds to the view of the pin arrangement on the encoder.

- Complete retrofit set
- Quickly and reliably fitted with the aid of the accessories
- Cost-effective modernisation solution
- TTL, HTL output
- Threads: M8, M10, M12, M16 und M20

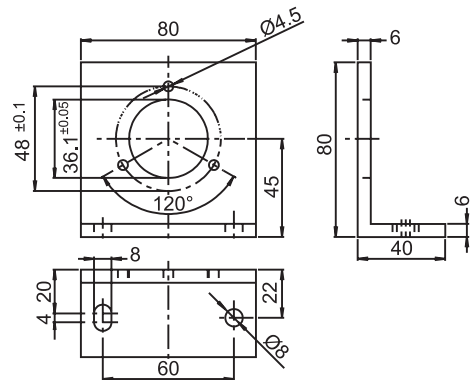
www.wachendorff-automation.com/wdgas58b

Installation Kit WDGAS58B:



Mounting bracket:

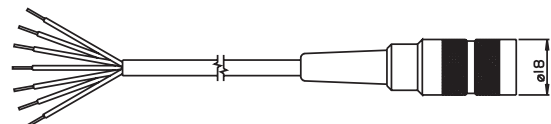
The mounting bracket makes for easy installation of the encoder in the lift system. However care should be taken that the admissible load of the coupling is adhered to.



Order No.: MW58B

Cable:

The cable is 15 m in length and is shielded, however the shield is not connected to the connector housing. With a mated connector, the encoder meets protection class IP40.



The cable has a connection as follows:

Function	Colour
Positive	brown
Negative	white
A	green
A inv.	red
B	yellow
B inv.	black
N	gray
N inv.	violet
Shield:	cable braiding

Order No.

KD84015

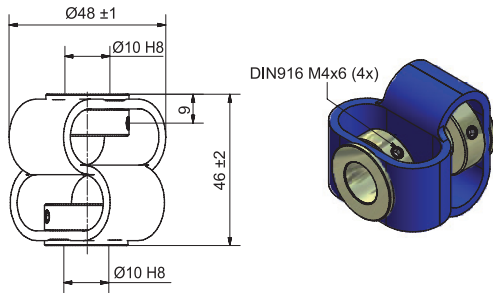
Double loop coupling:

The double loop coupling serves to compensate for any mis-alignment between the drive and the encoder. The coupling has extremely high compensation capabilities.

Features: excellent compensation capabilities
Max. offset of shafts: axial: max. ± 4 mm
radial: max. ± 3 mm
angular: $\pm 12^\circ$

Max. operating speed: 3000 rpm
Starting torque: max. 200 Ncm

Material:
- Hub: zinc-plated
- Compensating element: polyurethan
Weight: 85 g
Fixing: DIN 916 M4x6 (4x)
Operating temperature: -30°C up to $+80^\circ\text{C}$



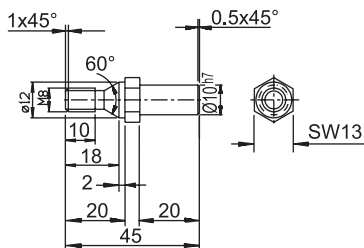
Order No.: DSK481010

Shaft adapters



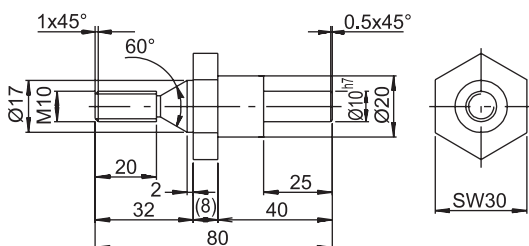
Shaft adapters:

The shaft adapters are screwed into an appropriate thread on the lift and allow a simple connection via the double loop coupling.



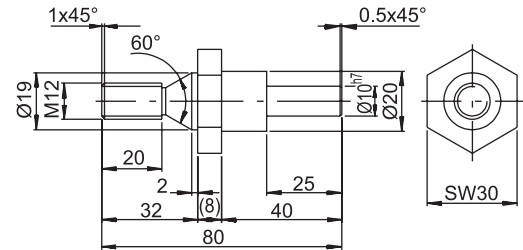
Shaft adapter M8

Order No.: WDGWA10M08



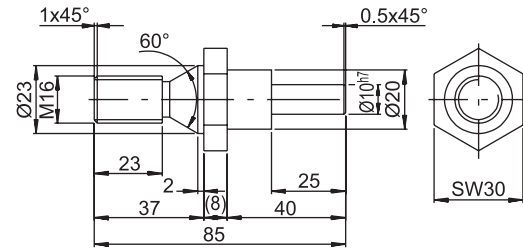
Shaft adapter M10

Order No.: WDGWA10M10



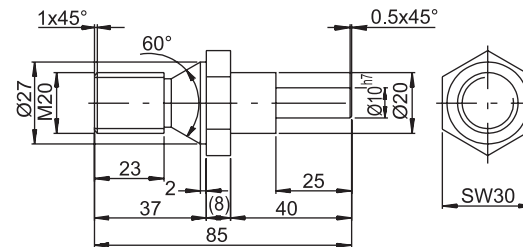
Shaft adapter M12

Order No.: WDGWA10M12



Shaft adapter M16

Order No.: WDGWA10M16



Shaft adapter M20

Order No.: WDGWA10M20

Note:

XX: Please insert the code corresponding to the required shaft adapter:

Shaft adapter 10/M8: 08
Shaft adapter 10/M10: 10
Shaft adapter 10/M12: 12
Shaft adapter 10/M16: 16
Shaft adapter 10/M20: 20

YYYY: Please specify required. PPR: 1024, 2048 or 4096

Ordering information WDGAS58B:

Description:	Order No.:
Installation Kit 10 VDC - 30 VDC HTL comprising: - WDG58B-YYYY-ABN-H24-SH8 - YYYY: with 1024, 2048, 4096 PPR - 3 channels, A, B, N - H24: 10 - 30 VDC Power supply - SH8: radial connector, 8 pin - MW58B - KD84015: 15 m ready-made shielded cable - DSK481010 - XX: Shaft adapter: 08, 10, 12, 16 or 20	WDGAS58BYYYYH24XX
Installation Kit 5 VDC TTL, RS422 comprising: - WDG58B-YYYY-ABN-R05-SH8 - YYYY: with 1024, 2048, 4096 PPR - 6 channels, A, B, N, A, B, N - R05: 5 VDC TTL power supply with inv. output circuit - SH8: radial connector 8 pin - MW58B - KD84015: 15 m ready-made shielded cable - DSK48101 - XX: Shaft adapter: 08, 10, 12, 16 or 20	WDGAS58BYYYYR05XX